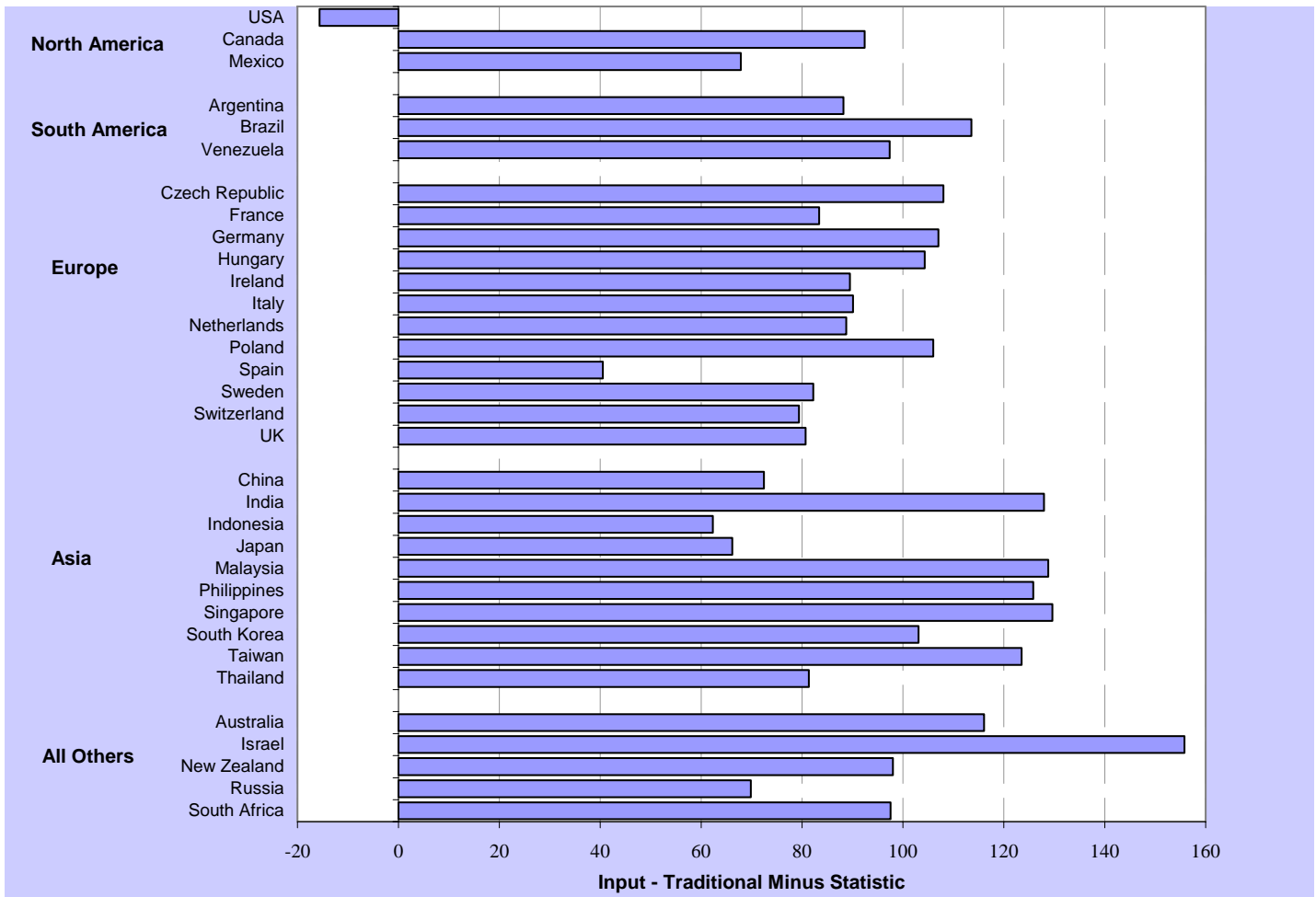


**Figure 19: Difference Scores, Traditional Minus Statistics-only for INPUT 2005 (INPUT-05)**



*Note:* INPUT adds together our four Input (leading) indicators – NO, SE, TI, and PC -- each of which is an average of components scaled 0-100, so the potential INPUT range is 0-400.

Between the Traditional and Statistics-only formulations of the INPUT-05 (Sum) indicator, all of the countries except for the USA show significant increases ranging from approximately 40 to 155. The mean and sample standard deviation for the difference in formulations is 92.8 and 30.7, respectively. The USA (S) formulation uniquely exceeds the (T) formulation.